



RACKS AND ACCESSORIES



Racks and accessories



Designed and manufactured according to the market requirements, Qubix racks are available in multiple versions with a wide selection of accessories and can be customized on the base of the installation requirements.

The range includes:

- racks for Datacenter and Server rooms with depth 1000 and 1200 mm
- floor standing and wall racks
- racks with degree of protection IP55 and IP65
- 10" racks, racks for special applications like Safety and Compact racks
- ventilation systems, cabling management, PDU and further accessories

<i>Datacenter racks</i>	<i>p.</i>	<i>6</i>
<i>Floor racks</i>	<i>p.</i>	<i>12</i>
<i>Wall racks</i>	<i>p.</i>	<i>18</i>
<i>Small office racks</i>	<i>p.</i>	<i>26</i>
<i>Accessories</i>	<i>p.</i>	<i>31</i>



Racks

Full range of 19" cabinets available both in floor standing and wall mount version. The sizes available for floor standing cabinets go from 22 to 47 units with 600 or 800 mm width and 600 to 1200 mm depth.

The wall mounted cabinets are available in 10" or 19" versions, 6 to 22 units, width from 270 to 600 mm.

To complete the offer, CCS® includes in the portfolio a wide range of accessories.

Datacenter racks

Tech	p. 6
IP 55	p. 10

Floor racks

Tech	p. 12
IP 55	p. 16

Wall racks

Tech	p. 18
IP 55	p. 20
IP 65	p. 22

Small office racks

Wall Tech D350	p. 26
Safety	p. 27
Compact	p. 28
Wall 10"	p. 29

ENTERPRISE



DATACENTER RACK



IP 55 RACK

COMMERCIAL



FLOOR RACK



IP55 RACK



WALL RACK

RESIDENTIAL



HOME CONSOLIDATION CABINET



SMALL OFFICE

CCS® range of cabinets and racks offers enclosure solutions that answer the specific needs of different environments, from Datacenter racks with depth of 1200 mm to the smaller cabinets for SOHO applications. New trends and needs come from the market, our R&D Dpt. has therefore revised and improved the range of our racks to offer reliable, functional products combined with a modern design. Specific solutions were also developed for harsh environments with complete range of IP55 racks already configured with all necessary accessories.

Installation Environment		Nr. of units (U)	Available widths (mm)	Available depths (mm)	Static load (kg)	Colour	19" uprights (pcs)	IP rate	Front door	Rear door/ panel
Datacenter		27 42 47	600 800	1000 1200	2000	Grey RAL 7035 Black RAL 9005	4	IP 20	Glass/ Grilled	Panel/ Double grilled door
		42	600 800	1000	750	Grey RAL 7035	4	IP 55	Glass/ Blind	Blind door
Floor		22 27 36 42 47	600 800	600 800	800	Grey RAL 7035 Black RAL 9005	2	IP 20	Glass	Panel
		26 42	600 800	600 800	750	Grey RAL 7035	4	IP 55	Glass/ Blind	Blind door
Wall mounted		6 9 12 15 22	600 570 (flat pack)	450 600	60	Grey RAL 7035 Black RAL 9005	4 2 (flat pack)	IP 20	Glass	Panel
		9 12 16	600	450 600	80 -120	Grey RAL 7035	2 (D450) 4 (D600)	IP 55	Blind	Panel
		10 13 17	600	400 500 600	50 D400/D500 60 D600	Grey RAL 7035	2	IP 65	Glass/ Blind	Panel
Small office		6	600	350	60	Grey RAL 7035	4	IP 20	Glass	Panel
		1 section structure	580	150	20	Grey RAL 7035	--	IP 20	Blind	Panel
		3U+5U	537	150	30	Grey RAL 7035	--	IP 20	Blind with plexiglass window	Panel
		7	358	270	15	Grey RAL 7035	2	IP 20	Glass	Panel

Datacenter *TECH* racks



The new Datacenter TECH racks with high depth represent the perfect choice for Server and Datacenter applications thanks to their specific characteristics. They are available in the version with front glass door and rear blind panel or with front and rear grilled doors, 2-sections side blind panels (1-section for the 27U). They are fully accessorized with no. 4 19" numbered uprights, brush strip cable entry, roof and floor base panels with removable flanges for cable entry, loading weight up to 2000 kg.

Colours



Grey RAL 7035



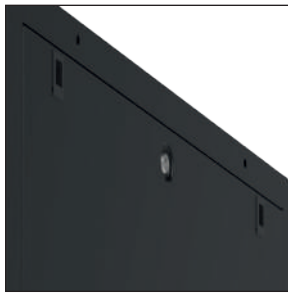
Black RAL 9005

Static Load



Dimensions (WxD)

600 x 1000
800 x 1000
800 x 1200



2-section side
blind panels



No. 4 numbered uprights
adjustable in depth



Front door with 3-point
locking system

Datacenter TECH racks

Description

Datacenter TECH cabinets are suitable to house all kinds of server computers and 19" active components that are available in the networking market. They can house all the 19" accessories and are suitable for the installation of specific accessories with greater depth and weight capacity to contain and support non-modular devices. The range includes cabinets with width of 600 and 800 mm and depth of 1000 and 1200 mm with front glass door and side and rear blind panels or with front and rear grilled doors and side blind panels.

General characteristics

- Steel sheet structure
- Colour: Grey RAL 7035 or Black RAL 9005
- Configurations with front glass door and side and rear blind panels or front grilled door and rear grilled double door with side blind panels
- Swing handle with key and 3- point locking system
- Door opening 180°
- 2-section blind side panels removable with locking key for the 42U and 47U versions; single section panels for the 27U version
- Ventilation slits for exhaust air and holes for the installation under the roof of ventilation units
- Brush strip cable entry on the base of rack
- Roof and floor base panels with removable trapdoors for cable inlet
- No. 4 19" uprights with unit number and adjustable in depth
- IP20 protection degree according to EN 60529
- Earthing kit
- No. 4 levelling feet
- Loading weight: 2000 Kg
- Compliant with standard IEC 60297, EN 61587-1, EN 60917

Description	Unit	Height	Width	Depth	Grey RAL 7035	Black RAL 9005	Front door	Rear door
Datacenter racks TECH	27U	1350	600	1000	2009128	2009128N	Glass	-
			800	1000	2009138	2009138N	Glass	-
	42U	2000	600	1000	2009115	2009115N	Glass	-
			800	1000	2009171	2009171N	Glass	-
			800	1000	2009163	2009163N	Grilled	Grilled double door
			800	1200	2009159	2009159N	Glass	-
			800	1200	2009164	2009164N	Grilled	Grilled double door
	47U	2240	600	1000	2009143	2009143N	Glass	-
			800	1000	2009134	2009134N	Glass	-

Accessories

Code	Description
2011491	Set of 4 wheels Datacenter racks TECH series
2011494	Set of 4 M12x100 levelling feet - Datacenter racks TECH series



Plinths for Datacenter cabinets

Description

Plinths for Datacenter TECH cabinets to allow and protect cable pass through. The kit consists of No. 4 supports to be installed at the corners of the cabinet and No. 4 removable flanges.

General characteristics

Installation	To be fixed at the base of Datacenter TECH cabinets
Structure	Painted steel sheet
Equipment	No. 4 angle brackets, No. 4 removable flanges for the passage of cables
Height	100 mm
Colour	Grey RAL 7035

Code	Description
2011465	Plinth for Datacenter TECH cabinet W600xD1000
2011466	Plinth for Datacenter TECH cabinet W800xD1000
2011467	Plinth for Datacenter TECH cabinet W800xD1200

Ventilation units for floor and Datacenter cabinets

Description

Ventilation units provided with 2 or 4 fans, with or without thermostat, for allowing air vent inside the cabinet. Suitable for the installation in floor standing and Datacenter TECH cabinets. Roof mounting with 0U space take up.

General characteristics

Installation	Roof mounting in floor standing and Datacenter TECH cabinets
Structure	Sheet steel structure, single fan size 120x120x38 mm, complete with power cable with schuko plug; analogue control thermostat from 0° to + 60° C (where included)
Electrical specification	Power supply 200-240 VAC, power consumption 25W for each fan
Capacity	150 m³/h for each fan
Noise level	49 dBA
Colour	Grey RAL 7035

Code	Description
2011442	2-fan ventilation unit for Datacenter TECH cabinets
2011444	4-fan ventilation unit for Datacenter TECH cabinets
2011447	2-fan ventilation unit + thermostat for Datacenter TECH cabinets
2011449	4-fan ventilation unit + thermostat for Datacenter TECH cabinets



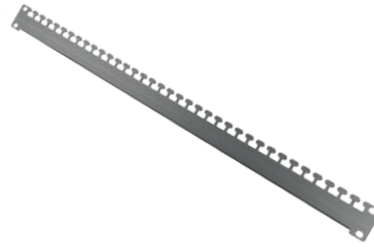
Cable management panel

Description

Pair of cable management panels with painted steel sheet structure complete with a snap-in cover, ideal for an easy and organized management of patch cords inside the cabinets. To be installed only in floor standing and Datacenter TECH cabinets with a width of 800 mm.

General characteristics

Installation	In floor standing and Datacenter TECH cabinets with a width of 800 mm
Structure	Steel sheet structure with a snap-in cover
Colour	Grey RAL 7035



Cable holding bracket

Description

Cable holding bracket made of steel sheet, ideal for managing cable bundles inside the cabinets. To be installed only in Datacenter TECH cabinets.

General characteristics

Installation	Horizontal mounting on the sides of the Datacenter TECH cabinets
Structure	Steel sheet
Size	Length of 882 mm for cabinets with depth of 1000 mm
Colour	Grey

Code	Description
2011438	Pair of cable management panels 42U for TECH cabinets
2011439	Pair of cable management panels 47U for TECH cabinets

Code	Description
2011423	Cable holding bracket for D1000 Datacenter TECH cabinet

Datacenter IP55 racks



Designed to meet special installation needs, especially in the industrial environment, the Datacenter IP55 racks for Server and Datacenter applications allow the installation of devices and servers in harsh work conditions. Depth 1000 mm, front and rear doors with 3-point locking system, no. 4 numbered uprights, plinth, setting for forced ventilation under the roof and eyebolts for the lifting of the rack.

Colour



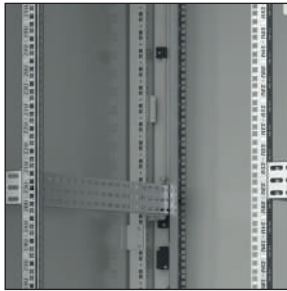
Grey RAL 7035

Static Load



Dimensions (WxD)

600 x 1000
800 x 1000



No. 4 numbered uprights
adjustable in depth



Side panels
with air filters



Ventilation unit

Datacenter IP 55 racks

Description

Datacenter IP cabinets are designed for the containment of all the main types of servers and 19" modular active equipment available in the networking market in environments where it is required a high protection degree. Racks have an IP55 protection degree and are available with a width of 600 or 800 mm and a depth of 1000 mm, equipped with front glass or blind door, rear door and blind side panels.

General characteristics

- Steel sheet structure
- Colour: Grey RAL 7035
- Front glass or blind door with 3-point closing system
- Rear blind door with 3-point closing system
- Blind side panels
- Door opening with lever system
- Removable roof
- No. 4 lifting eyebolts
- Brush strip cable entry on the base of the cabinet
- No. 4 numbered 19" uprights in accordance with IEC 60297-1 adjustable in depth
- Holes for the installation under roof of ventilation units
- Side filters for cabinet ventilation with external protective covers
- Plinth of 100 mm height
- IP55 degree of protection in accordance with EN 60529
- Impact resistance rating IK10 for cabinets with blind doors; IK09 for cabinets with glass doors
- Earthing kit
- Loading weight: 750Kg

Description	Unit	Height	Width	Depth	Grey RAL 7035	Front door
Datacenter IP55 racks	42U	2218	600	1000	2009207	Glass
					2009208	Blind
			800	1000	2009205	Glass
					2009201	Blind

Accessories



Code	Description
2011612	2 Fan ventilation unit with thermostat for floor/datacenter racks IP55

Floor TECH racks

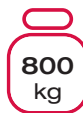


Floor TECH racks are the ideal solution for most installations. Versatility and great variety of configurations are the main characteristics of these racks. Standard configuration is front glass door with opening till 180°, 2-sections side and rear blind panels with locking key (1-section panel in 22 and 27U), no. 2 19" front numbered uprights adjustable in depth, roof and bottom cable inlets, levelling feet.

Colours

-  Grey RAL 7035
-  Black RAL 9005

Static Load



Dimensions (WxD)

- 600 x 600
- 600 x 800
- 800 x 600
- 800 x 800



Hinges with 180° opening angle



Numbered uprights adjustable in depth



Handle with locking key

Floor standing TECH racks

Description

Floor standing TECH cabinets are designed for the containment of the main equipment and 19" accessories for structured cabling and LAN networks. Racks are available with width of 600 or 800 mm and depth of 600 or 800 mm, equipped with front glass door, side and rear removable blind panels.

General characteristics

- Steel sheet structure
- Colour: Grey RAL 7035 or Black RAL 9005
- Front glass door with swing handle with key and 3- point locking system
- Door opening 180°
- 2-sections blind side and rear removable panels with locking key for the 36U, 42U and 47U versions; 1-section blind panels for the 22U and 27U versions
- Ventilation slits for exhaust air and holes for the installation on the roof of ventilation units
- Roof and floor base panel with removable flanges for cable inlet
- No. 2 19" uprights with unit number and adjustable in depth
- IP20 protection degree according to EN 60529
- Earthing kit
- Loading weight: 800Kg
- No. 4 levelling feet
- Compliant with standard IEC 60297, EN 61587-1, EN 60917

Description	Unit	Height	Width	Depth	Grey RAL 7035	Black RAL 9005	Additional uprights
Floor racks TECH	22U	1160	600	600	2009181	2009181N	2011404
	27U	1350	600	600	2009182	2009182N	2011405
			600	800	2009109	2009109N	2011405
	36U	1750	600	600	2009183	2009183N	2011407
			600	800	2009113	2009113N	2011407
			800	600	2009121	2009121N	2011407+2011400
			800	800	2009120	2009120N	2011407+2011400
	42U	2000	600	600	2009184	2009184N	2011408
			600	800	2009112	2009112N	2011408
			800	600	2009114	2009114N	2011408+2011400
			800	800	2009185	2009185N	2011408+2011400
	47U	2240	800	800	2009186	2009186N	2011409+2011400

Accessories

Code	Description
2011493	Set of 4 wheels for racks TECH series
2011492	Set of 4 M10x62 levelling feet TECH series



Plinths

Description

Plinths for floor standing TECH cabinets to allow and protect cable pass through. The kit consists of No. 4 supports to be installed at the corners of the cabinet and No. 4 removable flanges.

General characteristics

Installation	To be fixed at the base of floor standing TECH cabinets
Structure	Painted steel sheet
Equipment	No. 4 angle brackets, No. 4 removable flanges for the passage of cables
Height	100 mm
Colour	Grey RAL 7035

Code	Description
2011461	Plinth for floor standing TECH cabinet W600xD600
2011462	Plinth for floor standing TECH cabinet W600xD800
2011463	Plinth for floor standing TECH cabinet W800xD600
2011464	Plinth for floor standing TECH cabinet W800xD800

Ventilation units

Description

Ventilation units provided with 2 or 4 fans, with or without thermostat, for allowing air vent inside the cabinet. Suitable for the installation in floor standing and Datacenter TECH cabinets. Roof mounting with 0U space take up.

General characteristics

Installation	Roof mounting in floor standing and Datacenter TECH cabinets
Structure	Sheet steel structure, single fan size 120x120x38 mm, complete with power cable with schuko plug; analogue control thermostat from 0° to + 60° C (where included)
Electrical specification	Power supply 200-240 VAC, power consumption 25W for each fan
Capacity	150 m³/h for each fan
Noise level	49 dBA
Colour	Grey RAL 7035

Code	Description
2011442	2-fan ventilation unit for Datacenter TECH cabinets
2011444	4-fan ventilation unit for Datacenter TECH cabinets
2011447	2-fan ventilation unit + thermostat for Datacenter TECH cabinets
2011449	4-fan ventilation unit + thermostat for Datacenter TECH cabinets



Cable management panel

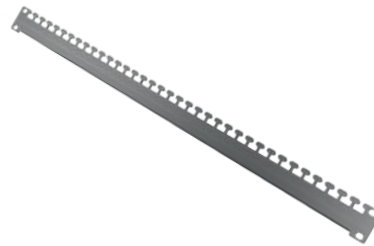
Description

Pair of cable management panels with painted steel sheet structure complete with a snap-in cover, ideal for an easy and organized management of patch cords inside the cabinets. To be installed only in floor standing and Datacenter TECH cabinets with a width of 800 mm.

General characteristics

Installation	In floor standing TECH cabinets with a width of 800 mm
Structure	Steel sheet structure with a snap-in cover
Colour	Grey RAL 7035

Code	Description
2011437	Pair of cable management panels 36U for TECH cabinets
2011438	Pair of cable management panels 42U for TECH cabinets
2011439	Pair of cable management panels 47U for TECH cabinets



Cable holding bracket

Description

Cable holding bracket made of steel sheet, ideal for managing cables bundles inside the cabinets. To be installed only in floor standing TECH cabinets.

General characteristics

Installation	Horizontal mounting on the sides of the floor standing TECH cabinets
Structure	Steel sheet
Sizes	Lengths of 482 and 682 mm for cabinet with depth respectively of 600 and 800 mm
Colour	Grey

Code	Description
2011421	Cable holding bracket for D600 floor TECH cabinets
2011422	Cable holding bracket for D800 floor TECH cabinets

Floor IP55 racks



The range of floor IP55 racks includes products with specific features for the installation in demanding environments. They are available in multiple versions from 600x600 to 800x800, IP55 protection degree, front and rear doors with 3-point locking system, no. 4 19" numbered uprights, plinth, setting for forced ventilation under the roof and eyebolts for the lifting of the rack.

Colour



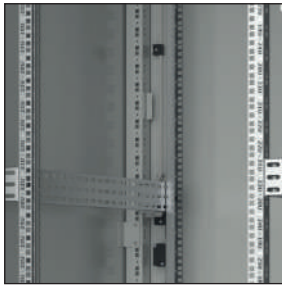
Grey RAL 7035

Static Load

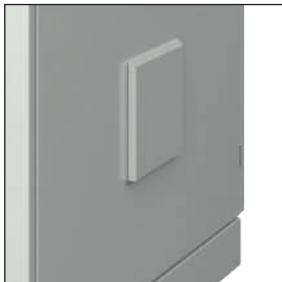


Dimensions (WxD)

600 x 600
600 x 800
800 x 800



No. 4 numbered uprights adjustable in depth



Side panels with air filters



Ventilation unit

Floor standing IP55 racks

Description

Floor standing IP55 cabinets with width and depth of 600 or 800 mm, front tempered glass or blind door and rear blind door, suitable for the containment of 19" active components and accessories in harsh environments where it's required a high protection degree.

General characteristics

- Steel sheet structure
- Colour: Grey RAL 7035
- Front glass or blind door with 3-point closing system
- Rear blind door with 3-point closing system
- Blind side panels
- Door opening with lever system
- Removable roof
- No. 4 lifting eyebolts
- Brush strip cable entry on the base of the cabinet
- No. 4 numbered 19" uprights in accordance with IEC 60297-1 adjustable in depth
- Holes for the installation under roof of ventilation units
- Side filters for cabinet ventilation with external protective covers
- Plinth of 100 mm height
- IP55 degree of protection in accordance with EN 60529
- Impact resistance rating IK10 for cabinets with blind doors; IK09 for cabinets with glass doors
- Earthing kit
- Loading weight: 750Kg

Description	Unit	Height	Width	Depth	Grey RAL 7035	Front door
Floor racks IP55	26U	1507	600	600	2009202	Glass
					2009203	Blind
			600	800	2009204	Glass
					2009209	Blind
			800	800	2009206	Glass
					2009211	Blind
	42U	2218	600	600	2009214	Glass
					2009215	Blind
			600	800	2009213	Glass
					2009212	Blind
			800	800	2009229	Glass
					2009200	Blind

Accessories




Code	Description
2011612	2 Fan ventilation unit with thermostat for floor/datacenter racks IP55

Wall *TECH* racks



Black colour available
only in flat pack

Easy to install and to transport, wall mounted cabinets TECH available now in versions from 6 to 22 units with a depth of 450 mm or 600 mm. Bottom and roof ventilation grills, glass door with screen-printed logo and safety key, no. 4 uprights and no. 2 L-shaped brackets, removable blind side panels are the key features of this range. Available in assembled version in grey RAL 7035 or in Flat Pack version in black colour RAL 9005.

Colours	Static Load	Dimensions (WxD)	Flat Pack
 Grey RAL 7035 assembled	 60 kg	600 x 350 570 x 450 600 x 450 570 x 600 600 x 600	 Available
 Black RAL 9005 flat pack			



Removable
side panels



Equipped for 1-fan
ventilation unit



No. 4 uprights adjustable
in depth (only
in the assembled version)

Wall mounted TECH cabinets

Description

Wall mounted cabinets TECH Series are suitable for the housing of the necessary equipment to realize cabling systems and LAN. Side panels can be easily removed giving access to rear cabling. Available with depth of 350, 450 or 600 mm, they can be supplied assembled or in flat-packs.

General characteristics

- Steel sheet structure
- Colour: Grey RAL 7035 for the assembled version; Black RAL 9005 for the flat-pack version
- Tempered safety glass door with >180° opening
- Safety key
- Removable blind side panels
- No. 4 vertical uprights adjustable in depth to install 19" standard equipment for the assembled version; no. 2 frontal 19" uprights for the flat-pack version
- No.2 L-shaped brackets for the equipment mount (only for the assembled version)
- Top and bottom cables inlet
- Ventilation slots allow air vent
- Suitable for the installation of forced ventilation units
- IP20 degree of protection according to EN 60529
- Static load 60 kg

Description	Unit	Height	Width		Depth	Grey RAL 7035 assembled	Black RAL 9005 Flat Pack
			Standard	Flat Pack			
Wall TECH racks	6U	370	600	-	350	2020021	-
		370	600	570	450	2020031	2020031NF
	9U	500	600	570	450	2020032	2020032NF
		500	600	570	600	2020042	2020042NF
	12U	635	600	570	450	2020034	2020034NF
		635	600	570	600	2020044	2020044NF
	15U	770	600	570	450	2020035	2020035NF
		770	600	570	600	2020045	2020045NF
	22U	1080	600	570	600	2020046	2020046NF

Accessories

Code	Description
2011081	1 Fan ventilation unit for wall racks PRO and TECH

Wall IP55 racks



Wall mounted cabinets IP55 are specifically designed to protect the cabling components and the connection equipments in any working condition. The range includes versions ranging from 9 to 16 units, depth 450 or 600 mm, front blind door, hinged roof, cable inlets in the bottom and setting for the forced ventilation under the roof.

Colour



Grey RAL 7035

Static Load



racks 9U



racks 12U



racks 16U

Dimensions (WxD)

600 x 450
600 x 600



Locking system with double key locks



Side air filters



Ventilation unit

Wall mounted IP55 cabinets

Description

Wall mounted IP55 cabinets designed for the containment of components for structured cabling and LAN networks to be installed in environments where a high protection degree is required. The range includes cabinets with a depth of 450 or 600 mm, front blind door and a hinged roof.

General characteristics

- Steel sheet structure
- Blind front door
- Locking system with double key locks
- Colour Grey RAL 7035
- No. 2 numbered 19" uprights adjustable in depth for the 450 mm depth version; no. 4 uprights for the 600 mm depth version
- Cable inlets on the base with PG cable glands and plastic gaskets pre-installed
- Hinged roof with ventilation slots
- Roof designed to house forced ventilation units with 2 fans
- Air filters on the sides with external covers
- IP55 protection degree according to EN 60529
- Degree of impact resistance: IK10
- Equipped for grounding
- Loading weight from 80 to 120 Kg depending on the model

Description	Unit	Height	Width	Depth	Code
Wall racks IP55	9U	543	600	450	2010302
			600	600	2010322
	12U	676	600	450	2010303
			600	600	2010323
	16U	854	600	450	2010304
			600	600	2010324

Accessories

Code	Description
2011616	2 Fan ventilation unit with thermostat for racks IP55
2011602	Kit for pole fixing for wall racks IP55
2011601	Pair of wall fixing brackets for wall racks IP55

Wall IP65 racks



Wall mounted cabinets IP65 are specifically designed to protect the cabling components and the connection equipments in any working condition. The range includes versions from 10 to 17 units, depth 400, 500 or 600 mm, equipped with glass or blind door, no. 2 uprights, bottom plate and cable entry flanges IP65, heaters, filters and fans, wall or pole mounting supports.

Colour



Grey RAL 7035

Static Load



D 400/500



D 600

Dimensions (WxD)

600 x 400
600 x 500
600 x 600



Pole mounting
support available



Removable cable inlet
flange



Blind door version

Wall mounted IP65 cabinets

Description

Wall mounted IP65 cabinets designed for the containment of components for structured cabling and LAN networks to be installed in environments where a high protection degree is required. The range includes cabinets with depth from 400 to 600 mm, front tempered glass or blind door.

General characteristics

- 15/10 steel sheet body
- Blind or glass front door
- Colour grey RAL 7035
- No.2 19" uprights
- No.2 sendzimir profiles fixed on the door
- Cable entry plate with gasket
- Locking system with double bit key, Ø 3mm
- Kit of grounding screws
- IP65 protection degree according to EN60529
- Degree of impact resistance: IK10 for models with blind door according to EN 62208, IK09 for glass door
- Static load 50 Kg (for cabinet with depth of 400-500 mm) or 60 Kg (for cabinet with depth of 600 mm)

In case of ventilation or conditioning systems installation, the cabinet has to be pre-fitted accordingly

Description	Unit	Height	Width	Depth	Glass door	Blind door
Wall mounted IP65 racks	10U	500	600	400	2010201	2010207
			600	500	2010204	2010210
	13U	600	600	400	2010202	2010208
			600	500	2010205	2010223
			600	600	2010212	2010213
	17U	800	600	400	2010203	2010209
			600	500	2010206	2010211
			600	600	2010215	2010218

Accessories

Description	Code
Kit for pole fixing for wall racks IP65 serie	2011331
Pair of wall fixing brackets for wall racks IP65	2011304



IP55 fans

Description

IP55 fans with grid and particle filter to allow air vent inside the wall mounted IP65 cabinets. To be ordered combined with the IP55 filters and together with the wall IP rack for the correct positioning of the holes on the rack.
Available with a air flow capacity from 40 to 386 mc/h.

General characteristics

Installation	On wall mounted IP65 cabinets
Structure	Fan body in Aluminum; body and external grid in plastic material (UL94 VO)
Air flow capacity	40 m ³ /h, 90 m ³ /h and 386 m ³ /h depending on the model
Dimensions & compatibility	150x150x80 mm -> Rack depth ≥ 400 mm 204x204x98,5 mm -> Rack depth ≥ 500 mm 322x322x143,5 mm -> Rack depth ≥ 600 mm
IP degree	IP55
Colour	Grey for the grid Black for the fan body

Code	Description	Packaging
2011307	IP55 fan 40 mc/h - 150x150 mm	1 pc.
2011319	IP55 fan 90 mc/h - 204x204 mm	1 pc.
2011324	IP55 fan 386 mc/h - 322x322 mm	1 pc.
2011328	Cabinet installation of 1 kit IP55 fan + IP55 filter	1 pc.



IP55 particle filters

Description

IP55 anti-impurity filters with grid for wall mounted IP65 cabinets available in different dimensions according to the requested air-flow. It is possible to install either 2 filters for the natural ventilation or 1 filter + 1 fan with the same dimension for the forced ventilation. To be ordered combined with the IP55 fans and together with the IP rack for the correct positioning of the holes on the rack.

General characteristics

Installation	On wall mounted IP65 cabinets
Structure	Body and external grid in plastic material (UL94-VO)
Dimensions	150x150x24 mm 204x204x30,5 mm 322x322x30,5 mm
IP degree	IP55
Colour	Grey

Code	Description	Packaging
2011306	IP55 filter 150x150 mm	1 pc.
2011318	IP55 filter 204x204 mm	1 pc.
2011323	IP55 filter 322x322 mm	1 pc.
2011328	Cabinet installation of 1 kit IP55 fan + IP55 filter	1 pc.

Small office racks

Wall TECH D350



Small Office TECH cabinet D350

Description

Small Office cabinet with reduced depth (350 mm) and removable side panels. Suitable for housing the necessary equipment and accessories to realize small structured cabling systems.

General characteristics

- Steel sheet structure
- Colour Grey RAL 7035
- Tempered safety glass door with >180° opening
- Safety key
- Removable blind side panels
- No. 4 vertical uprights adjustable in depth to install 19" standard equipment
- No.2 L-shaped brackets for the equipment mount
- Top and bottom cables inlet
- Ventilation slots allow air vent
- Suitable for the installation of forced ventilation units
- IP20 degree of protection according to EN 60529
- Static load 60 kg

Code	Description	Packaging
2020021	Small Office TECH cabinet W600xD350xH370 - 6 Units	1 pc.

Small office racks

Safety rack



Small Office Safety cabinet

Description

Wall mounted cabinet suitable for housing monitor, video recorder or any other device which needs to be protected against unauthorized access.

The devices are mounted on the lid by fixing them on proper 1U brackets while the monitor is installed on the bottom by the use of the available VESA fastening.

General characteristics

- One section steel sheet structure
- Safety double-key lock with diversified encoding
- Tray to lodge the devices 36,5 cm wide, equipped with 1U brackets and adjustable in width between 24 to 48 cm
- 1U brackets are replaceable with 2U ones
- Flaps to fix a 10" 4 sockets PDU
- Ventilation slots on all sides allow air vent. Equipped for the installation of 1-fan ventilation unit
- Pre-sheared profiles grant the cables inlet through the lower part of the side panels and on the bottom
- Bottom fastening to install monitors type VESA 50x50, 75x75, 100x100
- Dimensions W580xH546xD150 mm
- Colour Grey RAL 7035

Code	Description	Packaging
2010071	Small Office Safety cabinet W580xD150xH546 Grey RAL 7035	1 pc.
2010072	2U bracket for Small Office Safety cabinet	1 pc.
2010070	10" horizontal PDU with 2 sockets	1 pc.

Small office racks

Compact



Small Office Compact cabinet

Description

Compact wall mounted cabinet characterized by small dimensions, hinged locking system with plexiglass window and security key, with 5U fixed 19" rails and 3U adjustable 19" rails. Ideal for small structured cabling systems.

General characteristics

- Steel sheet structure
- Colour: Grey RAL 7035
- Closing/opening system with hinges on the back of the cabinet
- Lock with security key
- Plexiglass window
- 3U adjustable 19" front rails for accessories or equipment with maximum depth of 360 mm
- 5U fixed 19" rails for accessories or equipment with a maximum depth of 80 mm
- Side and bottom holes for the ventilation
- Cable entry holes in the bottom
- Load capacity: 30 kg

Code	Description	Packaging
2010073	Small Office Compact cabinet W537xD150xH475 - 3U adjustable + 5U fixed	1 pc.

Small office racks

Wall 10"



Small Office 10" cabinet

Description

10" enclosure for wall or desk installations, RAL 7035 varnished steel sheet structure with safety glass door and removable side panels, suitable for housing devices necessary to realize home and office networks.

General characteristics

- Steel sheet structure
- Safety tempered glass door with 180° opening
- Removable side panels
- Two 10" uprights adjustable in depth
- Top and bottom sides have removable trapdoors for cables inlet
- Dimensions: W358xD270xH386 mm, 7U
- Colour: Grey RAL 7035
- IP20 degree of protection according to EN 60529
- Equipped for grounding

SMALL OFFICE

Code	Description	Packaging
2010060	Small office 10" cabinet W358xD270xH386 - 7U - removable side panels	1 pc.

Small office racks

Wall 10'' - Accessories



RJ45 panel

Characteristics

- Varnished steel sheet structure
- No.8 blank ports for CCS RJ45 jacks
- 1 Unit
- Grey RAL 7035

Code
2010066
Description
10" 8-port blank panel for CCS RJ45 jacks - 1U



Optical Box SC/LC Duplex

Characteristics

- Varnished steel sheet structure
- No.8 blank ports for SC Simplex or LC Duplex adapters
- 1 Unit, depth 137 mm
- Grey RAL 7035

Code
2010068
Description
10" 8-port optical box for SC Simplex/LC Duplex adapters



Cable management panel

Characteristics

- Varnished steel sheet structure with No.2 cable management rings
- 1 Unit
- Grey RAL 7035

Code
2010062
Description
10" wire guide with 2 rings - 1U



Blind panel

Characteristics

- Varnished steel sheet structure
- 1 Unit
- Grey RAL 7035

Code
2010064
Description
10" blind panel - 1U



Fix shelf

Characteristics

- Varnished steel sheet structure
- Depth: 185 mm
- 1 Unit
- Grey RAL 7035

Code
2010063
Description
10" fix shelf - 185mm depth- 1U

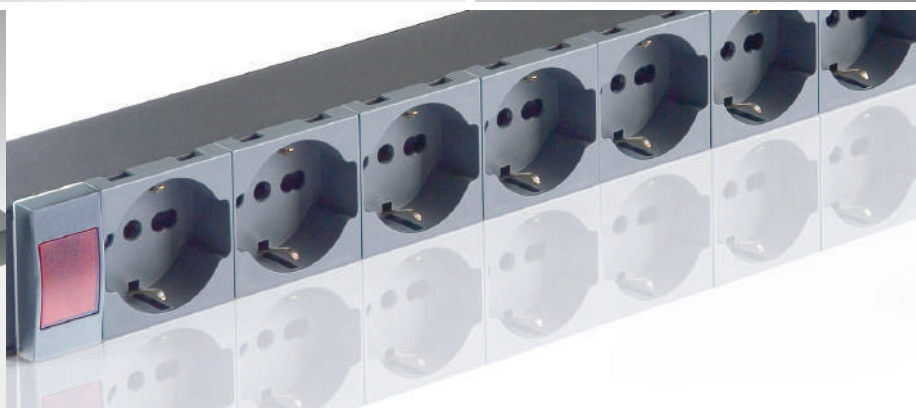
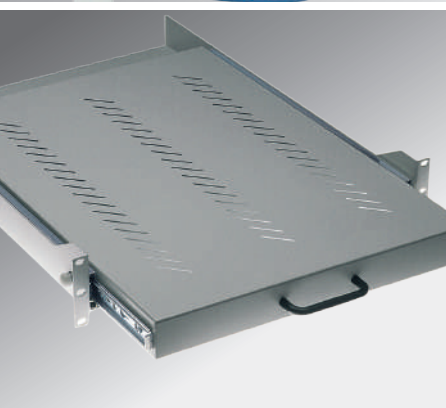


Power distribution unit

Characteristics

- Varnished steel sheet structure, black
- No.2 2P+T sockets
- 16A/250V light switch
- 10"; 1 Unit
- Cable H05VV-F 3G1,5 L=2,5 mt without plug

Code
2010070
Description
10" horizontal PDU



Accessories 19"

To complete the range, CCS® offers a wide selection of universal or specific accessories for every series of cabinets, including horizontal or vertical wiring management, ventilation, power supply and support equipment.

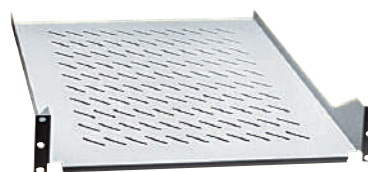
Fixed shelves	p. 172
Sliding shelves	p. 173
Blind panels and drawer	p. 174
Cabling management	p. 175
Ventilation	p. 178
DIN-rail	p. 179
PDU	p. 180
Plinths for cabinets	p. 182
Grounding and lighting	p. 183

Accessories

Fixed shelves



DEPTH 250 - 400



DEPTH 470 - 600 - 750

Fixed shelves

Description

19" fixed shelves with varnished steel sheet structure with depth from 250 to 750 mm for the support of non-modular equipments.
According to their depth, the shelves are to be fastened on the 2 front or on all the 4 uprights.
The choice of the suitable shelf depends on the cabinet depth and uprights equipment according to the chart below.

General characteristics

Installation	On 19" cabinets, fixing on 2 or 4 uprights according to the type of shelf
Structure	Varnished steel sheet
Dimensions	19" – 2 Units depth: 250/400/470/600/750 mm
Load	Between 25 to 80 kg according to the type
Colour	Grey RAL 7035

Code	Depth (mm)	Load (kg)	Fixing	Minimum cabinet depth (mm)
2011004	250	25	On 2 uprights	320
2011003	400	25	On 2 uprights	500
2011079	470	80	On 4 uprights	600
2011070	600	80	On 4 uprights	800
2011072	750	80	On 4 uprights	1000

Accessories

Sliding shelves



Sliding shelves

Description

19" sliding shelves with varnished steel sheet structure, with depth between 470 and 750 mm, equipped with rear bar for the fastening on 4 uprights, suitable for the support of non-modular equipments. The choice of the shelf depends on the cabinet depth and uprights equipment.

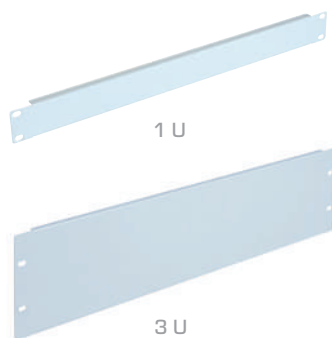
General characteristics

Installation	On 19" cabinets, fixing on 4 uprights
Structure	Varnished steel sheet
Dimensions	19"; 2 Units depth : 470/600/750 mm
Load	Between 40 and 50 Kg according to the type
Colour	Grey RAL 7035

Code	Depth (mm)	Load (kg)	Fixing	Minimum cabinet depth (mm)
2011019	470	50	On 4 uprights	600
2011089	600	40	On 4 uprights	800
2011116	750	40	On 4 uprights	1000

Accessories

Blind panels and drawer



Blind panels

Description

Varnished steel sheet blind panels for the closure of blanks inside the cabinet.

General characteristics

Installation	On 19" cabinets
Structure	Varnished steel sheet
Dimensions	19"; 1-3 Units
Colour	Grey RAL 7035 or Black RAL 9005

Drawer

Description

19" drawer with varnished steel sheet structure, mounting on 4 uprights, with safety key and suitable for the installation in cabinets with a depth of 600, 800 and 1000 mm.

General characteristics

Installation	On 19" cabinets; horizontal mounting on 4 uprights
Structure	Varnished steel sheet (thickness:20/10); max load: 20 Kg
Dimensions	19"; 2 Units; depth: 480 mm
Colour	Grey RAL 7035

Code	Description
2011005	Blind panel 1 U - Grey
2011007	Blind panel 3U - Grey
2011009	Blind panel 1U - Black
2011027	Blind panel 3U - Black

Code	Description
2011091	19" drawer 2U

Accessories

Cabling management



Cable management panel Black

Characteristics

- Installation on 19" cabinets, suitable for the horizontal cabling management
- Varnished steel sheet structure with 4 ABS cable management rings
- Dimensions: 19" -1U
- Colour Black RAL 9005

Code
2011018
Description
Cable management panel 1U - Black

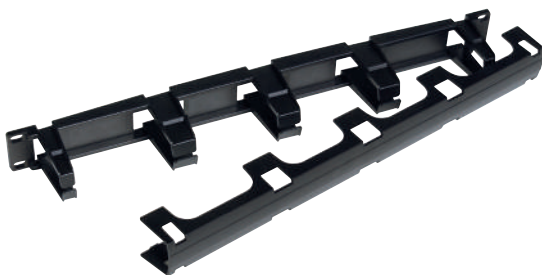


Cable management panel Grey

Characteristics

- Installation on 19" cabinets, suitable for the horizontal cabling management
- Varnished steel sheet structure with 4 ABS cable management rings
- Dimensions: 19" -1U
- Colour Grey RAL 7035

Code
2011017
Description
Cable management panel 1U - Grey



Cable management panel with cover 1U

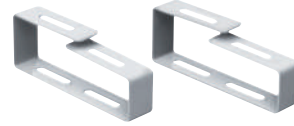
Characteristics

- Installation on 19" cabinets, suitable for the horizontal cabling management
- ABS base, cover and cable management rings
- Dimensions: 19"- 1U – Depth 70 mm
- Colour Black

Code
2011130
Description
Cable management panel with cover D70 mm 1U

Accessories

Cabling management



Cable management panel with brush

Description

19" Cable management panel with brush suitable for managing cables bundles inside the cabinets.

General characteristics

Installation	On 19" cabinets
Structure	Varnished steel sheet frame
Dimensions	19" - 1U
Colour	Black RAL 9005

Cable management rings

Description

Cable management ring made of varnished steel sheet, suitable for managing cables bundles inside the cabinets.

General characteristics

Installation	On cabinets, horizontal or vertical mounting
Structure	Varnished steel sheet
Dimensions	106x79 mm
Colour	Grey RAL 7035

Code	Description
2011118	Cable management panel with brush

Code	Description
2011021	Cable management ring

Accessories

Cabling management



Cable management panel

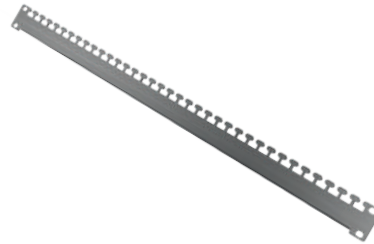
Description

Pair of cable management panels with painted steel sheet structure complete with a snap-in cover, ideal for an easy and organized management of patch cords inside the cabinets. To be installed only in floor standing and Datacenter TECH cabinets with a width of 800 mm.

General characteristics

Installation	In floor standing and Datacenter TECH cabinets with a width of 800 mm
Structure	Steel sheet structure with a snap-in cover
Colour	Grey RAL 7035

Code	Description
2011437	Pair of cable management panels 36U for TECH cabinets
2011438	Pair of cable management panels 42U for TECH cabinets
2011439	Pair of cable management panels 47U for TECH cabinets



Cable holding bracket

Description

Cable holding bracket made of steel sheet, ideal for managing cables bundles inside the cabinets. To be installed in floor standing and Datacenter TECH cabinets.

General characteristics

Installation	Horizontal mounting on the sides of the floor and Datacenter TECH cabinets
Structure	Steel sheet
Size	Lengths of 482, 682 and 882 mm for cabinets with depth respectively of 600, 800 and 1000 mm
Colour	Grey

Code	Description
2011421	Cable holding bracket for D600 floor TECH cabinets
2011422	Cable holding bracket for D800 floor TECH cabinets
2011423	Cable holding bracket for D1000 Datacenter TECH cabinets

Accessories

Ventilation



Ventilation units for floor and Datacenter cabinets

Description

Ventilation units provided with 2 or 4 fans, with or without thermostat, for allowing air vent inside the cabinet. Suitable for the installation in floor standing and Datacenter TECH cabinets. Roof mounting with 0U space take up.

General characteristics

Installation	Roof mounting in floor standing and Datacenter TECH cabinets
Structure	Sheet steel structure, single fan size 120x120x38 mm, complete with power cable with schuko plug; analogue control thermostat from 0° to + 60° C (where included)
Electrical specification	Power supply 200-240 VAC, power consumption 25W for each fan
Capacity	150 m³/h for each fan
Noise level	49 dBA
Colour	Grey RAL 7035

Code	Description
2011442	2-fan ventilation unit for TECH cabinets
2011444	4-fan ventilation unit for TECH cabinets
2011447	2-fan ventilation unit with thermostat for TECH cabinets
2011449	4-fan ventilation unit with thermostat for TECH cabinets

Fan for wall cabinets

Description

Single fan without thermostat, for allowing air vent inside the cabinet. Suitable for the installation in wall mounting TECH cabinets. Roof mounting with 0U space take up.

General characteristics

Installation	Roof mounting in wall TECH cabinets
Structure	Cast aluminum structure, fan size 120x120x44 mm
Electrical specification	Power supply 200-240 VAC, power consumption 25W
Capacity	150 m³/h
Noise level	43 dBA
Colour	Black

Code	Description
2011081	Axial fan for wall TECH cabinets

Accessories

DIN-rail



DIN-rail guide

Description

4 unit DIN-rail guide, with increased depth and height and specific holes for the cables inlet.
Suitable for the installation of equipments and accessories inside 19" racks .

General characteristics

Structure	Varnished steel sheet structure equipped with DIN-rail; side and rear holes for the cabling management
No. of DIN modules	Max. 24
Dimensions	19"; 4 Units ; Depth 150 mm
Installation	On CCS 19" racks; frontal fixing on uprights
Colour	Grey RAL 7035

Code	Description
2011171	19" DIN-rail guide - 4U

Enclosure for DIN mounting device

Description

Enclosure for DIN mounting device suitable for the installation of modular equipment inside 19" racks .

General characteristics

Structure	Varnished steel sheet structure equipped with DIN rail and front cover with hole; max. dispersible power 120W
Dimensions	19"; 3 Units ; Depth 55 mm
Installation	On CCS 19" racks; horizontal fixing on uprights
Colour	Grey RAL 7035

Code	Description
2011094	19" enclosure for DIN mounting device

Accessories

PDU



PDU with surge protection 6 Schuko sockets

Description

Power distribution unit with 6 Schuko sockets, light switch and power surge protection. Ideal to power active equipments inside racks.

General characteristics

Installation	On horizontal or vertical uprights
Structure	ABS frame with 6 sockets 2P+T Italian and German standard P11 and P30; light switch
Equipment	Cable H05VV-F 3G1 mmq L=1,5 mt with 16A Schuko plug
Power consumption	16A thermal protection with manual back-in-use; surge protection
Dimensions	19", 1 Unit
Colour	Black RAL 9005

Code
2011014
Description
PDU with power surge protection - 6 sockets

PDU with surge protection 8 Schuko sockets

Description

Power distribution unit with 8 Schuko sockets, light switch and power surge protection. Ideal to power active equipments inside racks.

General characteristics

Installation	On horizontal or vertical uprights
Structure	ABS frame with 8 Schuko sockets 2P+T German standard; light switch
Equipment	Cable H05VV-F 3G1 mmq L=1,5 mt with 16A Schuko plug
Power consumption	Current overload and power surge protection; EMI/RFI filter
Dimensions	19", 1 Unit
Colour	Black RAL 9005

Code
2011164
Description
PDU with power surge protection - 8 sockets

PDU with light switch

Description

Power distribution unit with 6 sockets and light switch. Ideal to power active equipments inside racks.

General characteristics

Installation	On horizontal or vertical uprights
Structure	Varnished steel sheet frame with 6 sockets 2P+T Italian and German standard; light switch
Equipment	Cable H05VV-F 3G1,5 mmq L=2 mt with Schuko plug
Power consumption	Max. 16A at 250V
Dimensions	19", 1 Unit
Colour	Black

Code
2011120
Description
PDU with light switch – 6 sockets

Accessories

PDU



PDU with warning light

Description

Power distribution unit with 9 sockets and warning light. Ideal to power active equipments inside racks.

General characteristics

Installation	On horizontal or vertical uprights
Structure	Varnished steel sheet frame with 9 sockets 2P+T Italian and German standard; warning light
Equipment	Cable H05VV-F 3G1,5 mm L=2 mt, with Schuko plug
Power consumption	Max. 16A at 250V
Dimensions	19", 1 Unit
Colour	Black

Code
2011121
Description
PDU with warning light - 9 sockets

PDU with magneto-thermal switch

Description

Compact power distribution units with 5-6-9 sockets and magneto-thermal switch. Ideal to power active equipments inside racks.

General characteristics

Installation	On horizontal or vertical uprights
Structure	Varnished steel sheet frame with 5-6-9 sockets 2P+T Italian and German standard; 16A magneto-thermal switch
Equipment	Cable H05VV-F 3G1,5 mmq L=2 mt with Schuko plug
Power consumption	Max 16A, thermal protection at 250V with manual back-in-use
Dimensions	19"; 1 Unit
Colour	Black

Code
2011122
Description
PDU with magneto-thermal switch - 5 sockets

Code
2011123
Description
PDU with magneto-thermal switch - 6 sockets

Code
2011124
Description
PDU with magneto-thermal switch - 9 sockets

Vertical PDU with magneto-thermal switch

Description

Power distribution unit with 12 sockets and magneto-thermal switch, vertical fixing only. Ideal to power active equipments inside racks.

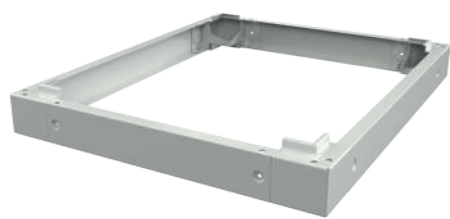
General characteristics

Installation	Vertical fixing only
Structure	Varnished steel sheet frame with 12 sockets 2P+T Italian and German standard; 16A magneto-thermal switch
Equipment	Cable H05VV-F 3G1,5 mmq L=2 mt with Schuko plug
Power consumption	Max 16A, thermal protection at 250V with manual back-in-use
Dimensions	L760,7 mm; 1 Unit
Colour	Black

Code
2011125
Description
Vertical PDU with magneto-thermal switch - 12 sockets

Accessories

Plinths



Plinths for Datacenter cabinets

Description

Plinths for Datacenter TECH cabinets to allow and protect cable pass through. The kit consists of No. 4 supports to be installed at the corners of the cabinet and No. 4 removable flanges.

General characteristics

Installation	To be fixed at the base of Datacenter TECH cabinets
Structure	Painted steel sheet
Equipment	No. 4 angle brackets, No. 4 removable flanges for the passage of cables
Height	100 mm
Colour	Grey RAL 7035

Code	Description
2011465	Plinth for Datacenter TECH cabinet W600xD1000
2011466	Plinth for Datacenter TECH cabinet W800xD1000
2011467	Plinth for Datacenter TECH cabinet W800xD1200

Plinths

Description

Plinths for floor standing TECH cabinets to allow and protect cable pass through. The kit consists of No. 4 supports to be installed at the corners of the cabinet and No. 4 removable flanges.

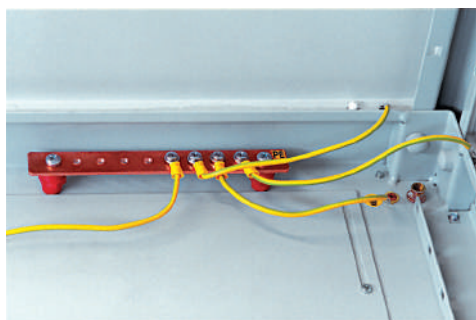
General characteristics

Installation	To be fixed at the base of floor standing TECH cabinets
Structure	Painted steel sheet
Equipment	No. 4 angle brackets, No. 4 removable flanges for the passage of cables
Height	100 mm
Colour	Grey RAL 7035

Code	Description
2011461	Plinth for floor TECH cabinet W600xD600
2011462	Plinth for floor TECH cabinet W600xD800
2011463	Plinth for floor TECH cabinet W800xD600
2011464	Plinth for floor TECH cabinet W800xD800

Accessories

Grounding and lighting



Copper bar for grounding

Characteristics

- Copper bar with No.10 M6 bores L240xD25xH3 mm
- No. 2 36 mm high insulators with M6 bores
- No. 4 M6x14 screws and No. 4 washers

Code
2011103
Description
Copper bar for grounding



Screws and cage nuts

Characteristics

- M6x12 zinc plated steel screws (UNI 7687)
- M6 cage nuts - white zinc plated steel
- Packing unit: 50 pcs

Code
2011013
Description
Screws and cage nuts



LED lamp

Characteristics

- Dimensions: 277x23x36 mm
- Efficiency: 310 Lumen/mt
- Power: 100-230VAC/ 4W
- Cable 1,5 mt long with plug

Code
2011134
Description
LED lamp

Sales Conditions

1. SCOPE

These conditions govern all contracts for the supply of products by Qubix SpA.
Any exceptions will be valid if made in writing within individual contracts.
These terms and conditions also apply to any future contracts between the same parties, except agreed otherwise.

2. DEFINITIONS

The term "Products" means the goods currently manufactured/sold by the Supplier and covered by the contract.
The term "Supplier" means the Company Qubix S.p.A.
The term "Purchaser" means the customer.

3. PRODUCT FEATURES

Information or data on the characteristics and/or technical specifications of products contained in brochures, price lists, catalogues or similar documents shall be binding only to the extent that such data have been explicitly stated in the Contract.

4. TRANSFER OF OWNERSHIP

The transfer of ownership of the products is subject to the full payment of the price by the Purchaser.

5. CONCLUSION OF CONTRACT

The order confirmation entails the acceptance of these general terms and conditions without any reservation.
Every order must be received by Qubix SpA in writing and signed by the Purchaser.
Normally verbal orders are not accepted, any exceptions due to exceptional reasons are totally at the Purchaser's risk.
The Purchaser's order is considered accepted only after the issuance of the order confirmation with all conditions set forth in it.

6. ORDER CANCELLATIONS

The order cancellation of products not held on stock and/or produced exclusively under the Purchaser's order are subject to the following penalties:

Cancellation received within 3 days from the order confirmation: 10% of the order value

Cancellation received within 7 days from the order confirmation: 80% of the order value.

7. DELIVERY

The delivery time listed in the order confirmation is indicative and may be subject to delays beyond the control of Qubix SpA.
Any delay, whether due to Qubix SpA or not, cannot justify the cancellation of the order. Delays due to Qubix SpA may give rise to a claim for compensation only where and to the extent those penalties have been established for that purpose and formalized in writing in advance.
Standard delivery term is EXW Padova Incoterms® 2010, unless otherwise agreed.

8. PACKING

The package is included in the normal list price.
Any special packaging required in writing by the customer will be billed at cost.

9. COMPLAINTS

Any complaint must be in writing and sent to Qubix SpA by registered letter A.R. within eight days from receipt of goods.
Claims relating to the quantity or appearance of products (apparent defects), must be notified by registered letter to the Supplier, under pain of forfeiture, within eight days from the date of receipt of goods. Any claims relating to defects not detectable by a careful inspection upon receipt (hidden defects) shall be communicated to the Supplier by registered letter, under pain of forfeiture, within eight days from the date of discovery of the defect but not later than the warranty period.
By way of exception, claims related to damage from transportation and authorized by the Supplier will have to be communicated to the Supplier within 24 hours of receipt of the goods by sending a copy of the waybill of the carrier, affixed with clear and specific reservations and with full photographic documentation.

10. WARRANTY

The Supplier guarantees the good quality of products by committing, during the warranty period stated below, to repair, or, under his sole discretion, free replace those parts which due to the bad quality of the material or manufacturing defects are faulty, provided this does not depend on:

- natural attrition
- failures caused by incompetence or negligence of the Purchaser
- imperfect assembly (unless the same has not been performed by the Supplier)
- tampering or interventions not authorized by the Supplier

Unless otherwise specified for the type of product, the warranty period is 12 months from the date of delivery and shall expire at the end of the period even though the products were not, for whatever reason, put in place. The warranty claim is subject to compliance with the terms of complaints as specified above. In case of defects, lack of quality or lack of conformity of products, the Supplier is only required to repair or replace them.

The above obligation to repair or replace the Products shall be in lieu of any warranty or liability of any kind required by law (eg. for defects, lack of quality or lack of conformity of the Products) and excludes all other liability of the Purchaser (whether in-or-extra contract) due to defects, lack of quality or non-compliance of products sold (eg. compensation for damages of plant shutdown, lost profits, etc.).

The return of products under warranty must be agreed with Qubix SpA, that will determine the delivery mode of goods.

All material to be repaired must be accompanied by an indication of the fault, otherwise the goods will not be accepted.

11. RETURNS

All returns must first be approved by the sales office of Qubix SpA by sending an authorization form and a RMA number.

The acceptance of returns is subject to sole discretion of Qubix SpA and is conditioned by the following clauses:

- product delivered to the Purchaser by no later than 8 days;
- unopened original packaging;
- current production model;
- return shipping cost prepaid.

12. TERMS OF PAYMENT

Payments must be made in the form agreed and specified in the order confirmation.

In case of late payment with respect to agreed date, the Purchaser must pay the Supplier interests on late payment in accordance with Legislative Decree no. 231/02.

The Purchaser is not authorized to make any deduction from the agreed price, unless prior written agreement with the Supplier. If the Supplier has any reason to fear that the buyer can not or do not intend to pay the Products at the agreed date, he will subject the delivery of products to the provision of adequate guarantees of payment.

13. GOVERNING LAW, ARBITRATION

13.1 This Agreement shall be construed and governed by Italian Law

13.2 Every effort will be made by both parties to settle amicably any disputes, misunderstandings or differences that may arise in connection with this Agreement.

13.3 If such a settlement can not be reached, all disputes arising out of or in connection with the present Agreement shall be finally settled under the Rules of Arbitration of the International Chamber of Commerce of Paris by one arbitrator appointed in accordance with the said rules; the arbitration will be directed in the English Language and will take place in Padova (Italy).

WEEE EUROPEAN DIRECTIVE (2012/19/EU)

Waste from Electrical and Electronic Equipment

The WEEE Directive aims to reduce the volume of waste from electrical and electronic equipment (EEE). It requires that some end-of-life products can not be landfilled but must be managed by a system that provides for separate collection and for a specific treatment of separation, recycling and recovery. According to the RAEE Directive QUBIX SpA has set up all the procedures for the commercialization of EEE of the brands Qubix Spa manages the marketing: - entrust to the group ecoRit the management activities of the end-to-life equipment - cost internalization of WEEE disposal in the selling price of the EEE (WEEE eco-contribution acquired) - enrolment to the National Register of producers as required by Ministerial Decree 25 September 2007, No 185 - affixing of the crossed out bin symbol on individual items covered by the Directive. The crossed out bin symbol indicates that the end-of-life product must be separately collected from other waste and separately deposited at authorized collection centers, in the cases and manner prescribed by national laws of EU countries, to avoid adverse effects on the environment and human health. Illegal disposal of end-of-life products is sanctioned by law. It is in any case appropriate that the consumers verify that in his country the product is actually subject to the WEEE regulations.

Products distributed by Qubix Spa that are included in the WEEE European Directive 2012/19/EU

PRODUCT DESCRIPTION/MANUFACTURER	COMMODITY CATEGORY
Active equipments for data networks - Planet	6.8
Videosurveillance equipments - Planet/Qubix	6.8
PDU, patch-cords for domestic use	5.24
Verification instruments for data networks in copper and fiber	5.21

Group: ERION WEEE
FEE description: eco-tax paid

Edition: June 2023

Qubix SpA. reserves the right to change at any time and without notice the features and specifications of the products shown.

© Qubix S.p.A. All rights reserved.

It is highly prohibited to copy, publish and/or use any content of the catalogue without the formal authorization by Qubix SpA.
All the included material is protected by copyright: contents (registered trademarks, texts, images or other contents) are of exclusive property of Qubix SpA.



CCS CONNECTIVITY & CABLING SYSTEM

is a trademark of:

Qubix S.p.A networking solutions
Via Canada, 22/A - 35127 Padova -ITALY
Tel. +39-049 7801994 - Fax +39 049 775667

www.ccs-cabling.it

